

# Implementation and Evaluation Strategies for the Eat, Sleep, Console Model of Care for Neonates Diagnosed with Neonatal Abstinence Syndrome: A Scoping Review Protocol

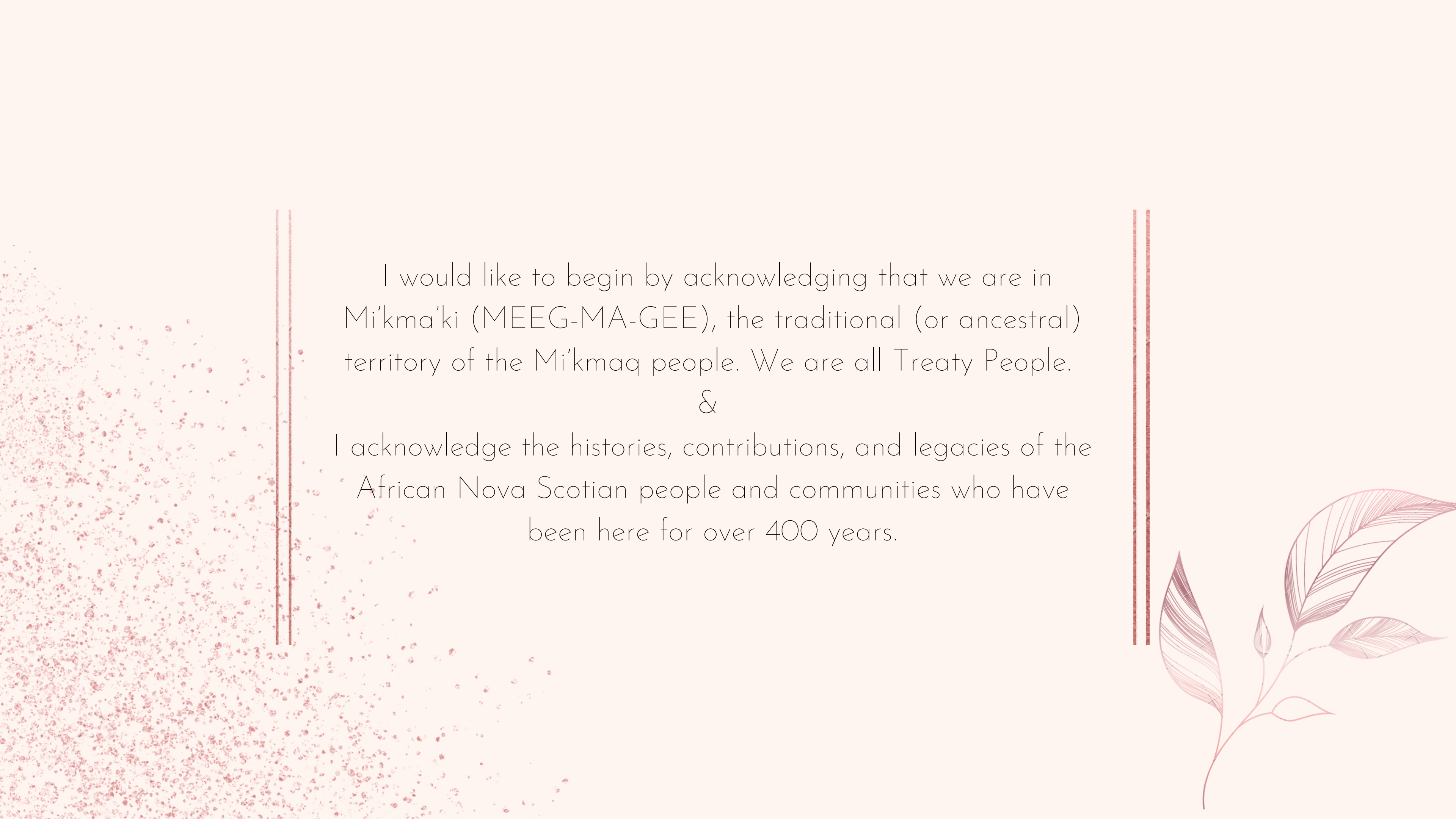
Maddie Gallant, BScN RN PhD In Nursing Student  
Co-Supervisors: Dr. Christine Cassidy & Dr. Megan Aston

November 9th 2022



## CONTENT OF TODAY'S PRESENTATION


1. Introduction to the project
2. Project Background & Purpose
3. Methods to be used
  - a. Stages 1-5
4. Dissemination Plans & Impact of findings



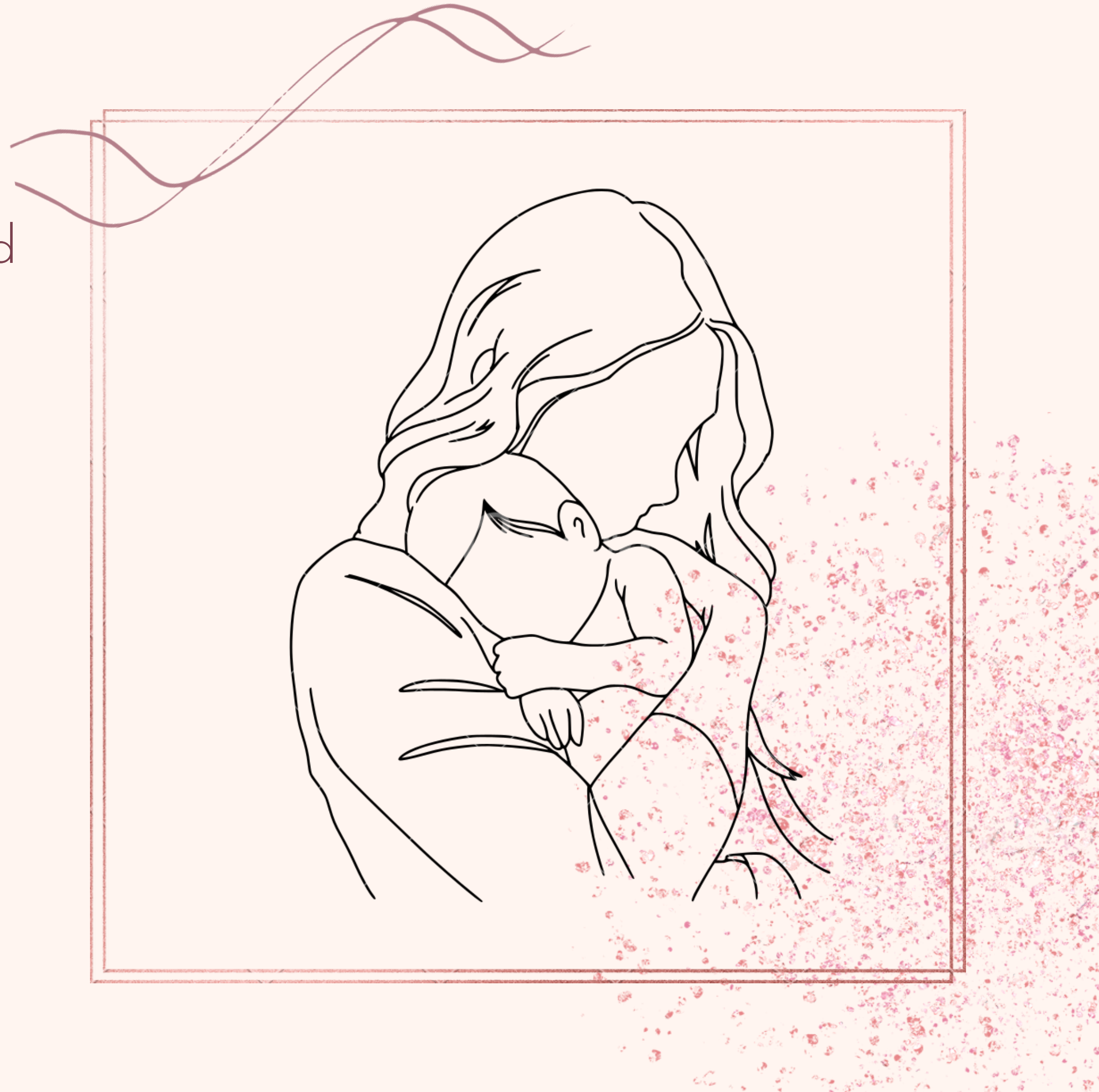
I would like to begin by acknowledging that we are in Mi'kma'ki (MEEG-MA-GEE), the traditional (or ancestral) territory of the Mi'kmaq people. We are all Treaty People.

&

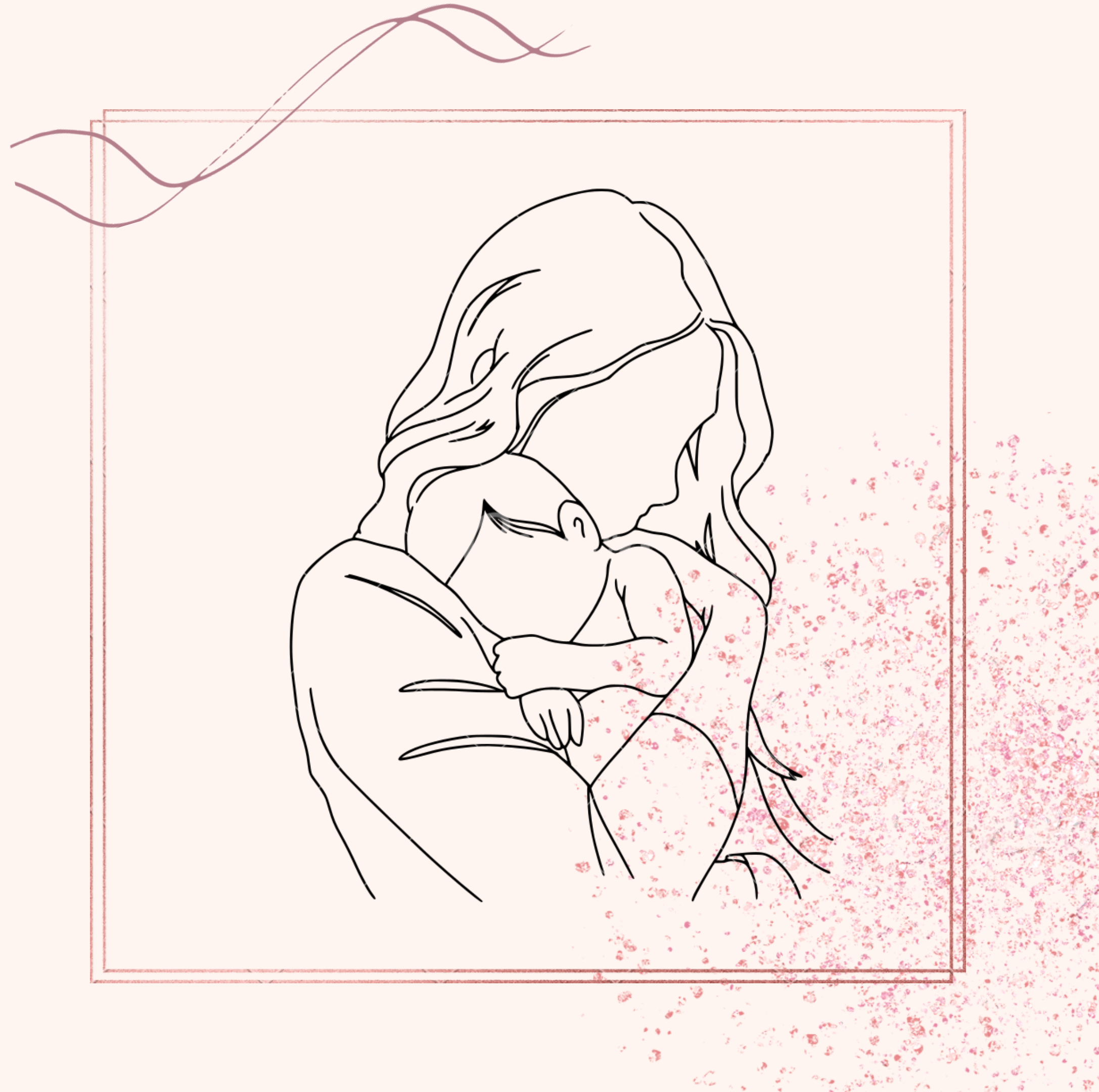
I acknowledge the histories, contributions, and legacies of the African Nova Scotian people and communities who have been here for over 400 years.



- Neonatal Abstinence Syndrome (Neonatal Opioid Withdrawl Syndrome) is a growing population in Nova Scotia
- A complex population requiring extensive health care resources and support
- Current practices are not evidenced-based
- Stigma and discrimination continue to exist for this population




- There has been a prompt transition to address the population's growing needs to a new model of care: The Eat, Sleep, Console (ESC) model of care.
- No systematic exploration into how to ensure this model is successful and sustained in improving health outcomes for this population and the health care system





A circular graphic with a thin brown border. The top-left portion of the circle is decorated with a leafy branch. The text is centered within the circle.

USE AN IKT  
APPROACH

A circular graphic with a thin brown border. The top-left portion of the circle is decorated with a leafy branch. The text is centered within the circle.

FOUNDED ON A  
PRIORITY  
IDENTIFIED  
CONCERN

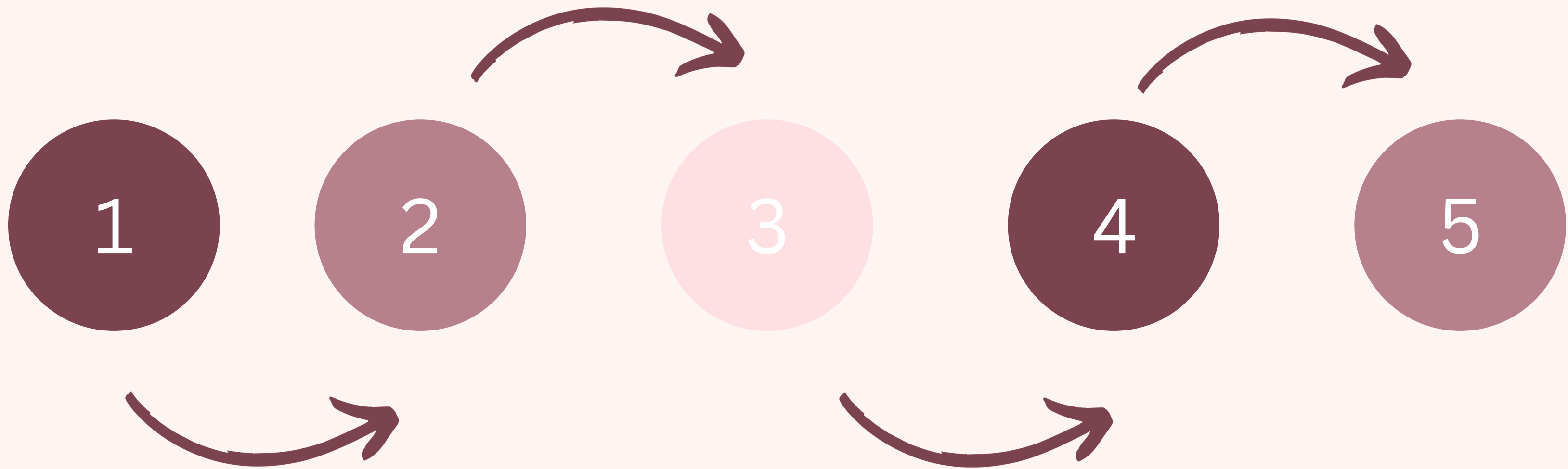
A circular graphic with a thin brown border. The top-left portion of the circle is decorated with a leafy branch. The text is centered within the circle.

WILL PROVIDE  
A  
FOUNDATION



# METHODS

- *Joanna Briggs Institute (JBI) Methodology & Arksey and O'Malley 's scoping review framework*







# 1

## STAGE ONE

How has the ESC model been implemented and evaluated in practice?

1.1 What strategies have been used to implement the ESC model of care into practice?

1.2 What are the reported barriers and facilitators to the implementation of the ESC model of care?

1.3 How is the reach, effectiveness, adoption, implementation, and maintenance evaluated in the implementation of the ESC model of care?

1.4 What are the reported measures and outcomes?





2

STAGE TWO

**P**

2

**C**

**C**



# 2

## STAGE TWO



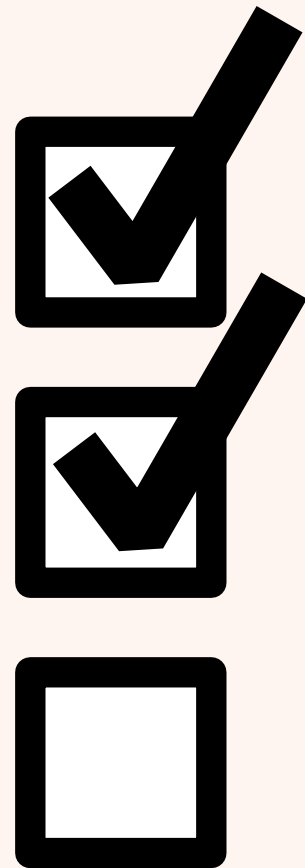
- Developed a comprehensive search strategy with a librarian scientist
- Published and unpublished material
- Three-step search strategy (developed a proposed search<sup>2</sup>)
- Godin's grey literature methodology





3

## STAGE THREE



- Preferred Reporting Items for Systematic Reviews and Meta-Analysis (PRISMA) extension for scoping reviews
- Two independent reviewers (1) Screen title and abstract; and (2) full-text screen

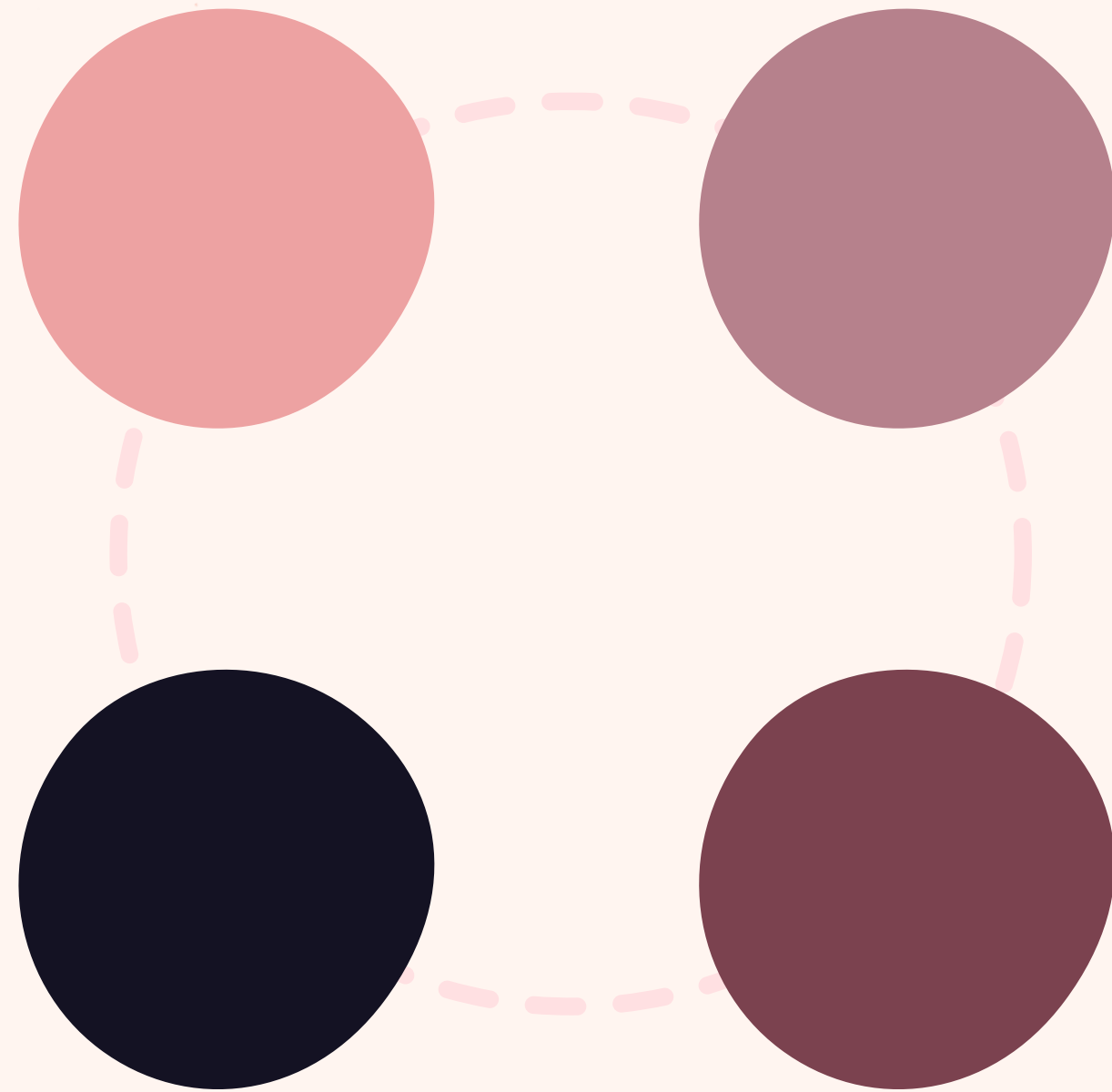
2






4

# STAGE FOUR



- Charting the data on a data extraction tool
  - It will include the following elements:
    - General Characteristics
    - 1.1 Barriers and Facilitators (using TDF and COM-B)
    - 1.2 Implementation Strategies (using ERIC Taxonomy)
    - 1.3 Evaluation Strategies (using RE-AIM)
    - 1.4 Outcomes (using Bick & Graham)
- 



# 5

## STAGE FIVE

- Present findings in comprehensive ways for our target populations
  - Detailed tables based on objectives
  - Diagrams to support a visual representation of findings
  - Narrative descriptions of qualitative and quantitative data



# DISSEMINATION AND IMPACT

- Support future implementation and evaluation of the ESC model in practice
- It will provide foundational knowledge for my PhD in designing methods for completing a comprehensive process evaluation
- We will share findings through journal publications, conference presentations, and local meetings with key knowledge users.





THANK YOU  
REFERENCES ARE  
AVAILABLE UPON  
REQUEST

**Authors:**

Gallant, Sarah Madeline

Macneil, Morgan

Al-Rassi, Joyce

Mann, Cynthia

Falconer, Allyson

Mcleod, Rebecca

Aston, Megan

Cassidy, Christine

Available in Pre-Print Format:

<http://hdl.handle.net/10222/81989>